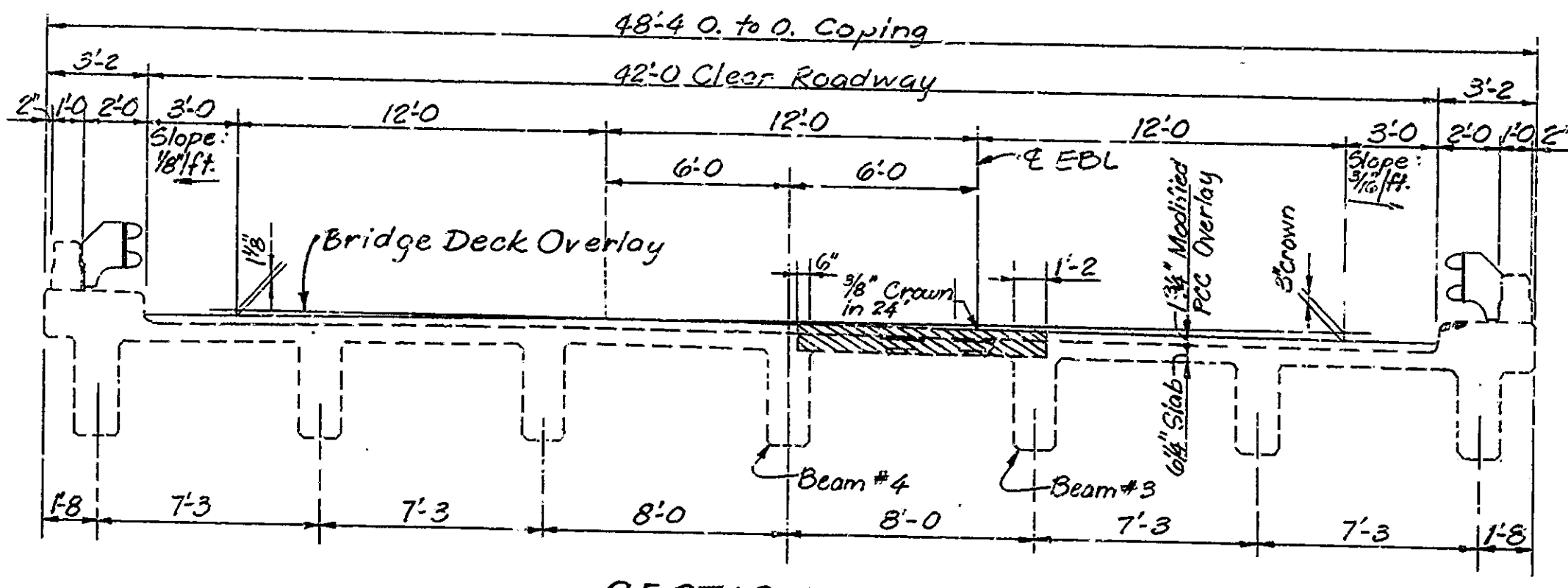


▨ - Indicates area of deck removal

PLAN
Scale: 3/32" = 1'-0"



SECTION A-A
Scale: 1/4" = 1'-0"

GENERAL NOTES

Plans for this structure are on file in the Central Office as Bridge File I-465-154-4649A and are available on request.
 Reinforcing steel shall have a minimum cover of 2 1/2" for top steel & 1" for all other steel, unless noted.
 All concrete in superstructure to be Class A.
 Where new work is to be fitted to old work, the contractor shall check all dimensions and conditions in the field and report any errors or discrepancies to the Engineer and assume responsibility for their correctness and the fit of the new part to the old.
 The chipping and clearing of damaged deck areas shall be as directed by the Engineer. It is the intent of these plans that all such damaged concrete be removed, and should there be any doubt as to the quality of the concrete, removal shall continue until perfectly sound concrete is exposed.
 All exposed reinforcing shall be cleaned, cut, and straightened. Cut existing reinforcing steel leaving minimum lap lengths as indicated on the details and lap with new reinforcing steel.
 All removal equipment used for partial concrete removals of bridge structures shall be hand held. Pneumatic hammers, 30 lbs. maximum weight shall be used on all removal areas to be patched and all areas within 24 inches of full depth removal lines. Pneumatic hammers, up to 90 lbs. maximum weight may be used for all other removals outside these limits. Deck areas that are to be removed full depth shall be completely separated from adjacent concrete before hammers heavier than 30 lbs. may be used.

CONSTRUCTION PROCEDURE

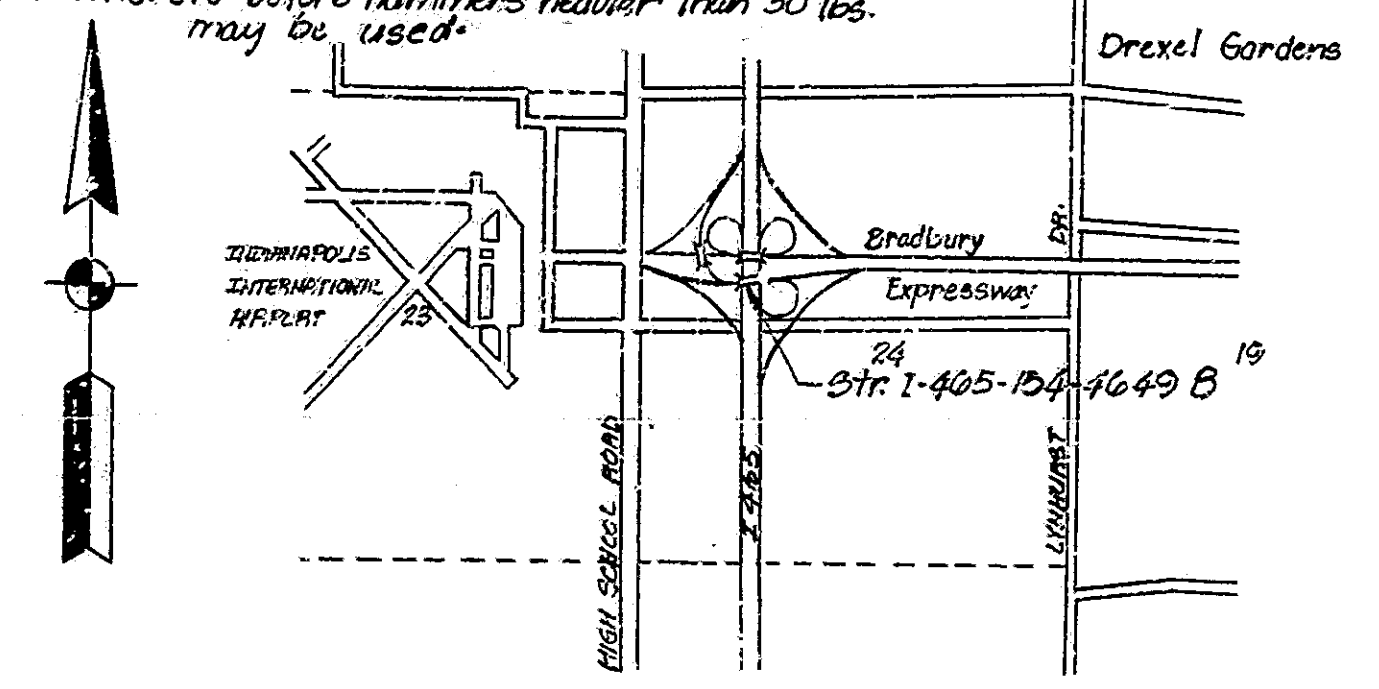
Install traffic control devices for the repair of Str. I-465-154-4649B.
 Remove portions of the slab in areas indicated on the General Plan and Detail Sheets.
 Cut, straighten, and clean the reinforcing bars and lap with new reinforcing bars.
 Inject epoxy into the cracks in the damaged beam.
 Replace portions of the slab which were removed.
 The above sequence of work does not necessarily indicate the exact order of operations required to complete the work.

INDEX

SHEET NO.	SHEET DESIGNATION	SUBJECT	F.H.W.A. APPROVAL
1	R1	GENERAL PLAN & TITLE SHEET	
2	R2	TRAFFIC MAINTENANCE DETAILS	
3	R3	REPAIR DETAILS	

INDEX STANDARD DRAWINGS

SHEET NO.	SHEET DESIGNATION	SUBJECT	REVISED OR APPROVED
4	BRIDGE STD. C1	MISCELLANEOUS DETAILS	R-6-1-77
5	ROAD STD. SHEET CB-2	TEMP. CONC. BARRIER	R-11-1-77
6	ROAD STD. SHEET 9	TRAFFIC SIGN DETAILS	R-4-1-77
7	RD. STD. SHEET 2	DETOUR SIGNS	R-5-1-77
8	RD. STD. SHEET 2A	DETOUR SIGNS	R-5-1-77
9	RD. STD. SHEET 3	DETOUR SIGNS	R-3-1-77
10	RD. STD. SHEET 4	DETOUR SIGNS	R-4-1-77
11	RD. STD. SHEET 5A	DETOUR SIGNS	R-2-1-77



SITUATION PLAN
Scale: 1" = 2,000'

GENERAL PLAN & TITLE SHEET
 REPAIR TO REINF. CONCRETE GIRDER & STEEL BEAM BRIDGE; 4 SPANS 40'-6, 73'-6, 73'-6, 34'-6 ~ SHEW: 7° 30' AT., 42'-0" CL. RDWY.
 BRADBURY EASTBOUND OVER I-465
INDIANA STATE HIGHWAY COMMISSION

SCALE: AS NOTED DATE: JUNE 9, 1980

Phelps H. Killeen
SENIOR DESIGNER

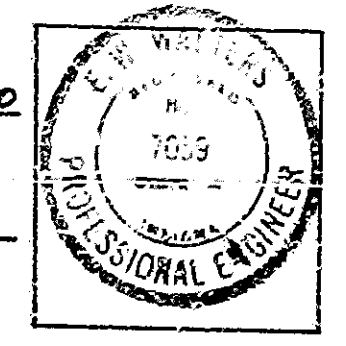
DRAWING: R1 OF 3 SHEET: 1 OF 11
 PROJECT: ST-I-465-4 (J)
 CONTRACT NO. B-1270B
 BRIDGE FILE: I-465-154-4649B

INDIANA STATE HIGHWAY COMMISSION
 STANDARD SPECIFICATION DATED 1978
 TO BE USED WITH THESE PLANS

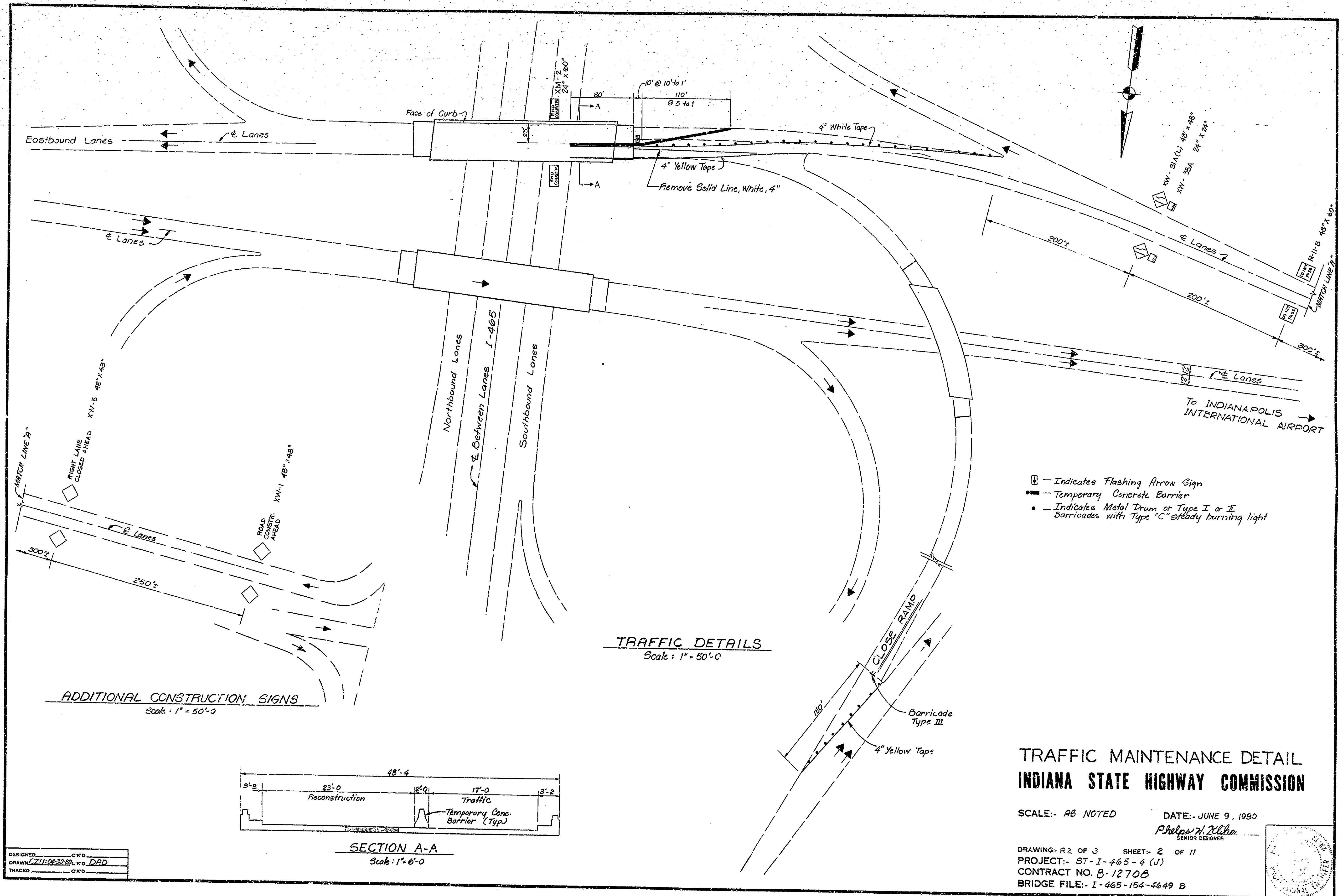
RECOMMENDED FOR APPROVAL 6-10-80
 William B. Smith
 ASSISTANT ENGINEER OF BRIDGE DESIGN
 INDIANA STATE HIGHWAY COMMISSION

RECOMMENDED FOR APPROVAL 6-10-80
 F. W. Walters
 ENGINEER OF BRIDGE DESIGN
 INDIANA STATE HIGHWAY COMMISSION

R. K. Hallenbeck
 CHIEF ENGINEER, INDIANA STATE HIGHWAY COMMISSION
 DATE: 6-10-80



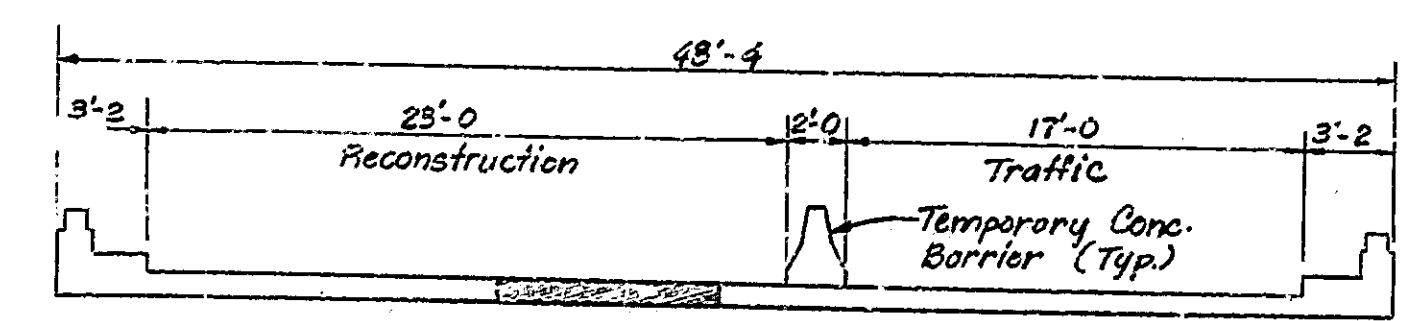
DESIGNED: CKB
 DRAWN: ZU: 04-29-80 CKB DAD
 TRACED: CKB



- ◻ - Indicates Flashing Arrow Sign
- ▬ - Temporary Concrete Barrier
- - Indicates Metal Drum or Type I or II Barricades with Type "C" steady burning light

TRAFFIC DETAILS
Scale: 1" = 50'-0"

ADDITIONAL CONSTRUCTION SIGNS
Scale: 1" = 50'-0"



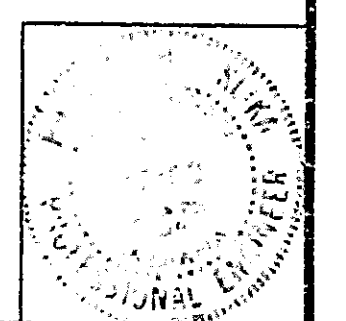
SECTION A-A
Scale: 1" = 6'-0"

TRAFFIC MAINTENANCE DETAIL
INDIANA STATE HIGHWAY COMMISSION

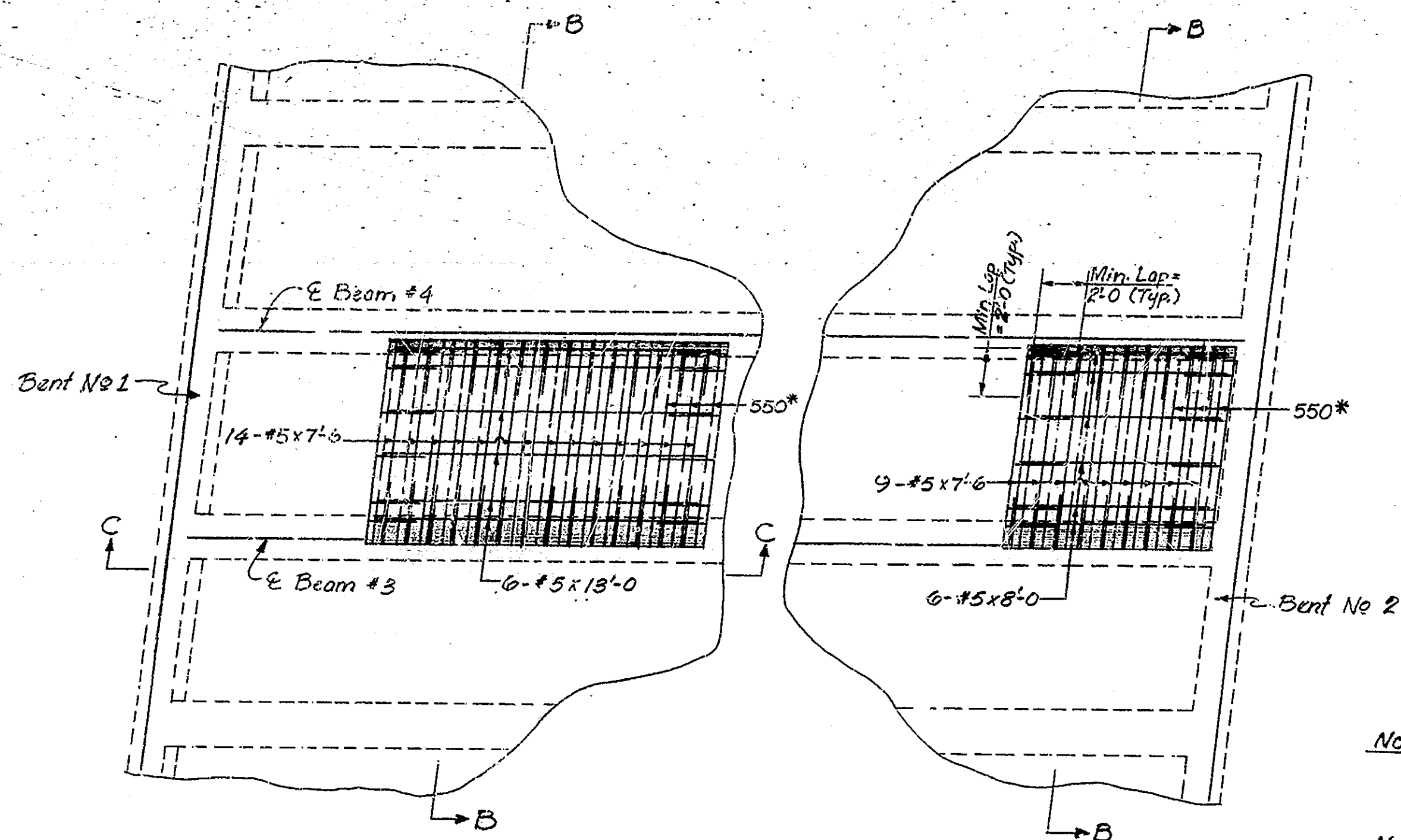
SCALE: AS NOTED DATE: JUNE 9, 1980

Phelps H. Kline
SENIOR DESIGNER

DRAWING: R2 OF 3 SHEET: 2 OF 11
PROJECT: ST-I-465-4 (J)
CONTRACT NO. B-12708
BRIDGE FILE: I-465-154-4649 B

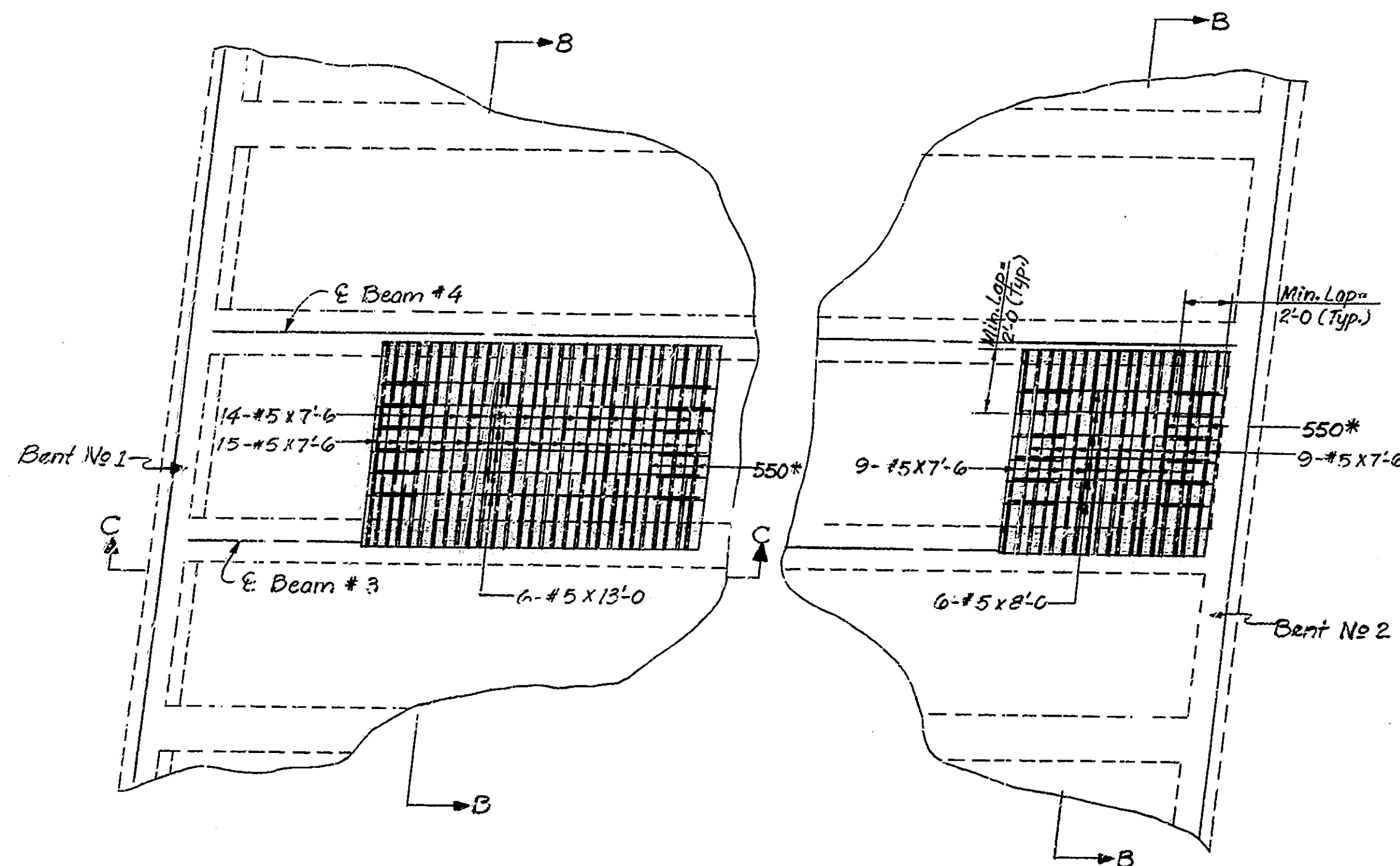


DESIGNED: CKD
DRAWN: CZU:043080, CKD, DPD
TRACED: CKD

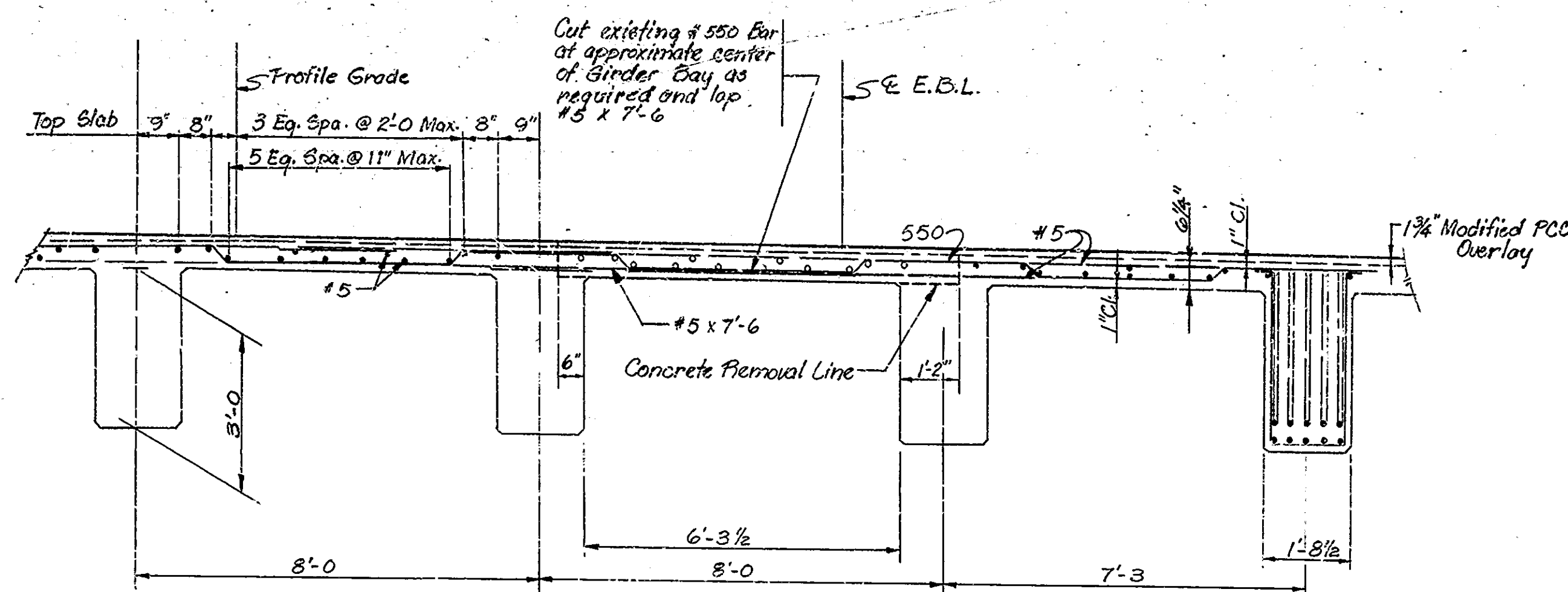


SLAB PLAN - TOP STEEL
Scale: 1/4" = 1'-0"

* Note: For cut and lap details of the bar No. 550 see Section B-B



SLAB PLAN - BOTTOM STEEL
Scale: 1/4" = 1'-0"



SECTION B-B
Scale: 1/2" = 1'-0"

Note: Existing Reinforcing Steel to be cut to allow for a minimum 2 ft. lap, cleaned, straightened and left in place undamaged to be lapped with new steel.

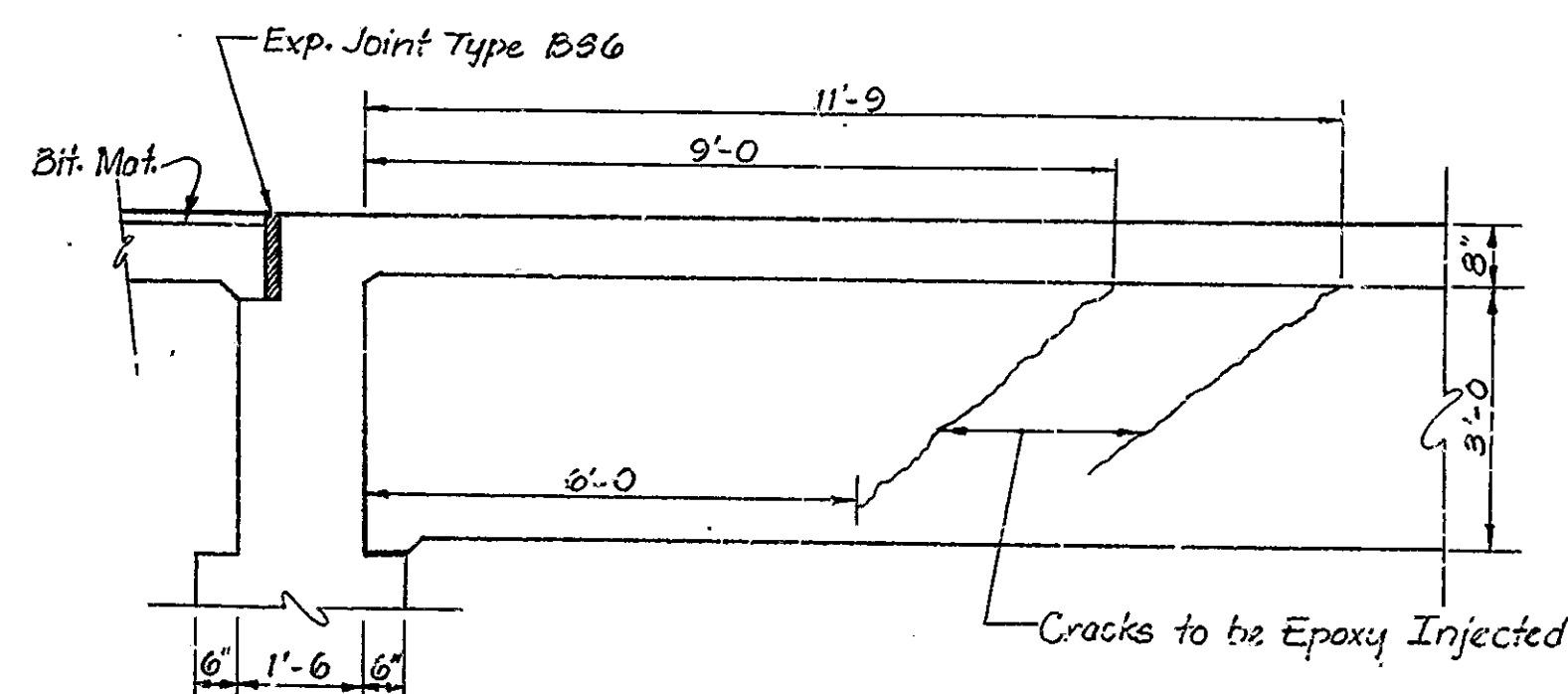
Note: Removal area to be saw cut 1" deep

BILL OF MATERIALS

REINFORCING STEEL			
MARK & SIZE	NO. OF BARS	LENGTH	WEIGHT (LBS.)
#5	12	13'-0"	
#5	12	8'-0"	
#5	70	7'-6"	
TOTAL			810
CLASS "A" CONCRETE			4.30 C.Y.S.

ESTIMATE OF QUANTITIES

STRUCTURE PAY ITEMS			
CODE NO.	DESCRIPTION	UNIT	TOTAL QUANTITY
51001	CONCRETE CLASS A	CYS.	4.30
51030	REINFORCING STEEL	LBS.	810
	INJECT EPOXY IN BEAM	LSUM	1
52366	TEMP. PAVEMENT MARKING TAPE	LFT.	1000
52340	CONSTRUCTION SIGNS TYPE A	EACH	10
52345	CONSTRUCTION SIGNS TYPE B	EACH	2
52350	STANDARD BARRICADE TYPE III	EACH	1
	TEMPORARY CONCRETE BARRIER	LFT.	200
	REMOVAL OF LINE - SOLID WHITE	LFT.	155
52821	FLASHING ARROW SIGN	EACH	1
	REMOVAL OF STRUCTURE PORTIONS	LSUM	1
52640	MAINTENANCE OF TRAFFIC	LSUM	1
	LINE, WHITE, SOLID, 4 IN.	LFT.	155



SECTION C-C
Scale: 1/2" = 1'-0"

REPAIR DETAIL
INDIANA STATE HIGHWAY COMMISSION

SCALE: AS NOTED DATE: JUNE 9, 1980

Philip N. Kline
SENIOR DESIGNER

DRAWING: R3 OF 3 SHEET: 3 OF 11
PROJECT: ST-I-465-4 (J)
CONTRACT NO. B-12708
BRIDGE FILE: I-465-154-4649 B

DESIGNED: CTD
DRAWN: JLD/DFD
TRACED: JLD